



### performance collection

Tailored from a superfine but incredibly strong Polyester/Wool Blend fabric; the "Performance Collection" offers unrivalled performance whilst maintaining all of the sophistication and style that the Brook Taverner & "wardrobes" Business Collections have become famous for.

This 11 piece collection offers something for all wearers from highly fashionable styles to more classic styles. Choose from 3 ladies jackets and a choice of 2 trousers and 2 skirts and a waistcoat with a matching men's suit and waistcoat; all available in 4 colours.

Fabric: 55% Polyester, 45% Wool Plain weave  
Weight: 340 grams per linear metre  
Performance: Grade 4/5 piling. Taken to 60,000 rubs on a Martindale test without any threads breaking (retail tests normally stop at 18,000 rubs)  
Shrinkage: Negligible  
Aftercare: Dry Clean Only

The Performance Collection has been sold successfully to hundreds of business users throughout Europe for the last two years. The customer satisfaction ratings are excellent with below 0.01% adverse reaction of any description.

This weight of fabric is ideal for outside wear and environments that require extremely durable corporate clothing.

*performance  
collection*

Ortona Jacket, 3 button jacket.  
Ortona Trousler, single pleat trouser.

Brindisi Jacket, 1 button jacket, double breast lapel with hand edged stitching.  
Vercelli Trousler, parallel leg trouser.



Ortona Jacket, 3 button jacket.  
Ortona Trousers, single pleat trousers.



Brindisi Jacket, 1 button jacket, double breast lapel with hand edged stitching.  
Vercelli Trousers, parallel leg trousers.

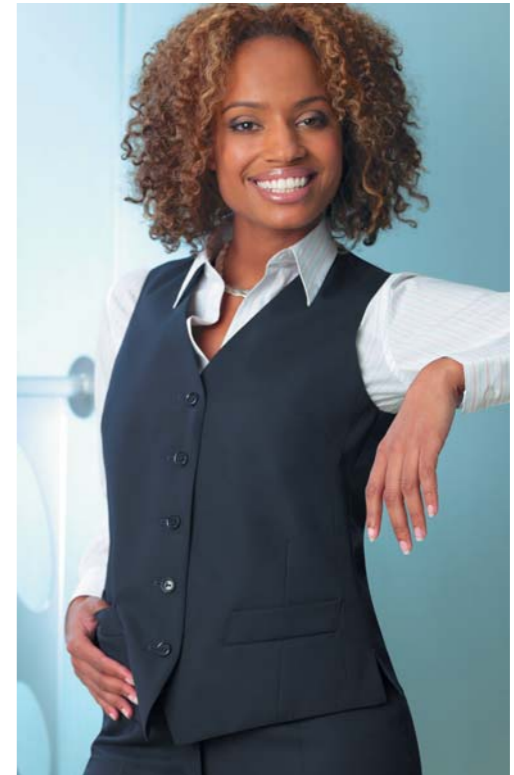


Elba Jacket, 2 button short jacket.  
Sabini Skirt, straight skirt.

Elba Jacket, 2 button short jacket.  
Sienna Skirt, longline skirt.



Ovada Jacket, 3 button jacket.  
Ravenna Trouser, flat front trouser.



Perugia Waiscoat,  
Cloth backed,  
5 button waistcoat.



Vercelli Trouser, parallel leg trouser.  
Sicilia Stretch Top, (see page 72).



Ravenna Trouser, flat front trouser.  
Sicilia Stretch Top, (see page 72).



Sabini Skirt, straight skirt.



Sienna Skirt, longline skirt 14" centre vent front and back.



Ortona Trousers, single pleat trousers.  
Chelsea Shirt, Oxford weave (see page 73).



Cagliari Waistcoat, cloth backed, 5 button waistcoat.  
Trafalgar Shirt, (see page 71).



## performance collection

Tailored from a superfine but incredibly strong Polyester/Wool Blend fabric; the "Performance Collection" offers unrivalled performance whilst maintaining all of the sophistication and style that the Brook Taverner & "wardrobes" Business Collections have become famous for.

This 11 piece collection offers something for all wearers from highly fashionable styles to more classic styles. Choose from 3 ladies jackets and a choice of 2 trousers and 2 skirts and a waistcoat with a matching men's suit and waistcoat; all available in 4 colours.

Fabric: 55% Polyester, 45% Wool Plain weave  
 Weight: 340 grams per linear metre  
 Performance: Grade 4/5 piling. Taken to 60,000 rubs on a Martindale test without any threads breaking (retail tests normally stop at 18,000 rubs)  
 Shrinkage: Negligible  
 Aftercare: Dry Clean Only

The Performance Collection has been sold successfully to hundreds of business users throughout Europe for the last two years. The customer satisfaction ratings are excellent with below 0.01% adverse reaction of any description.

This weight of fabric is ideal for outside wear and environments that require extremely durable corporate clothing.

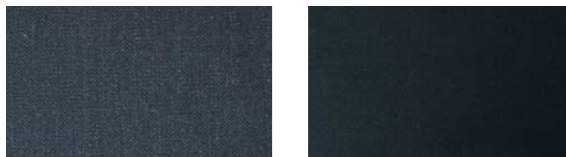
## Colours available

Fabric: 55% Polyester, 45% Wool Plain weave



A - navy

B - navy shadow stripe



C - charcoal

D - black

## Styles available



### BRINDISI Jacket (*Brin las in 'in' deasy*) Single Breasted Jacket

1 button front, double breast lapel with hand edged stitching, 2 slanted flap pockets, 1 inside pocket, no vents.

2138A Navy  
 2138B Navy shadow stripe  
 2138C Charcoal  
 2138D Black



### ELBA Jacket (*Elle bah*) Short Jacket

2 button front, 2 jetted pockets, 1 inside pocket, centre vent.

2137A Navy  
 2137B Navy shadow stripe  
 2137C Charcoal  
 2137D Black



### OVADA Jacket (*O var dah*) Single Breasted Jacket

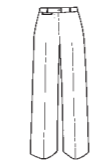
3 button front, 2 jetted and flap pockets, 1 inside pocket, no vents.

2135A Navy  
 2135B Navy shadow stripe  
 2135C Charcoal  
 2135D Black



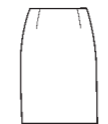
### RAVENNA Trousers (*Wra ven ah*) Flat Front Trousers

2140A Navy  
 2140B Navy shadow stripe  
 2140C Charcoal  
 2140D Black



### VERCELLI Trousers (*Vair chelly*) Parallel Leg Trousers

2139A Navy  
 2139B Navy shadow stripe  
 2139C Charcoal  
 2139D Black



### SABINI Skirt (*Sa beany*) Straight Skirt

2142A Navy  
 2142B Navy shadow stripe  
 2142C Charcoal  
 2142D Black



### SIENNA Skirt (*Sea n ah*) Longline skirt

2141A Navy  
 2141B Navy shadow stripe  
 2141C Charcoal  
 2141D Black



### PERUGIA Ladies (*Pear ou gia*) Cloth backed, 5 button waistcoat.

2171A Navy  
 2171D Black



### ORTONA Jacket (*Or tone ah*) Single Breasted Jacket

3 button jacket, centre vent, 4 inside pockets.

5495A Navy  
 5495B Navy shadow stripe  
 5495C Charcoal  
 5495D Black



### ORTONA Trousers (*Or tone ah*) Single Pleat Trousers

8374A Navy  
 8374B Navy shadow stripe  
 8374C Charcoal  
 8374D Black



### CAGLIARI Mens (*Ca-lea-ri*) Cloth backed, 5 button waistcoat.

1109A Navy  
 1109D Black

## performance collection

### Size range available

#### Wardrobes - Ladies Wear

##### Jackets: Ovada

6 - 16 petite  
 6 - 24 regular  
 10 - 24 long

##### Jackets: Elba

6 - 16 petite  
 6 - 24 regular  
 10 - 18 long

##### Jackets: Brindisi

6 - 16 petite  
 6 - 18 regular  
 10 - 18 long

#### Trousers

6 - 24  
 in leg lengths 27", 29", 31", 33" & 36" unfinished

#### Skirts

6 - 16 short  
 6 - 24 regular  
 8 - 24 long

#### Longline Skirts

6 - 24 regular  
 10 - 24 long

#### Waistcoat: Perugia

6 - 24 regular

#### Brook Taverner - Menswear

##### Jacket: Ortona

36 - 50 regular  
 36 - 48 short  
 38 - 48 long

##### Trousers: Ortona

28 - 48  
 in leg lengths 29.5", 31.5", 33" & 36" unfinished

##### Waistcoat: Cagliari

36 - 50 regular